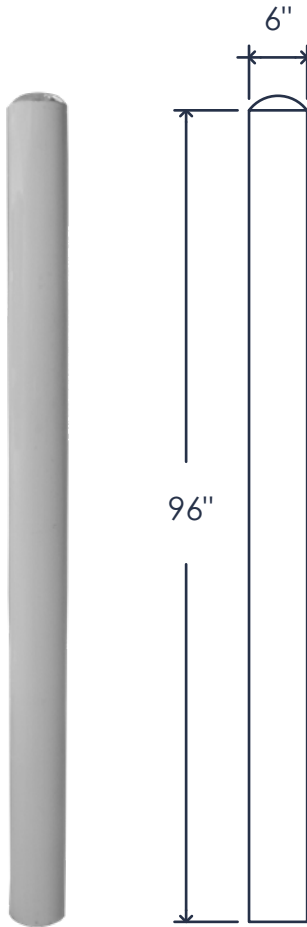




PORTLAND BOLLARDS

Made By Portland Stone Ware



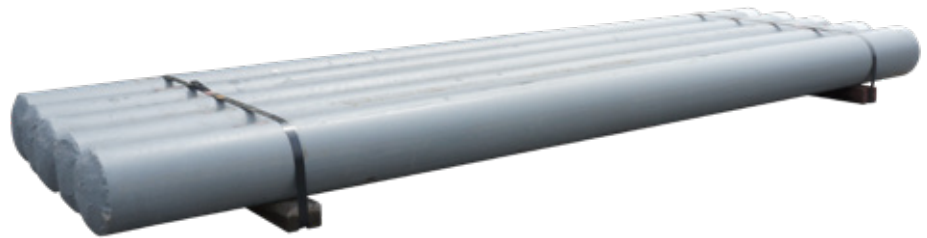
8' x 6" OD 16 gauge Bollard

Specification Sheet

Painted Gray | Item Code: BL609

Bollards are visible barriers used to protect valuable areas.

Common placement of bollards are in commercial/industrial settings to block areas such as parking lots, sidewalks, storefronts and utility equipment. They are also often used to restrict access to specific areas to promote safe environments.



Individual Bollard

Code: BL609

Steel Thickness: 16 gauge

Fill: 3000 psi concrete with round top

Finish: painted gray

Individual Size (without packaging): 6" x 98"

Individual Weight (without packaging): 248 lbs

Palletted Bollards

Code: BL609

Steel Thickness: 16 gauge

Fill: 3000 psi concrete with round top

Finish: painted gray

Pallet Size: 98" L x 32" W x 9" H

Pallet Weight: 1,260 lbs



PORTLAND STONE WARE CO.

50 McGrath Road
Dracut, MA 01826
1 (800) 343-0001

portlandstoneware.com